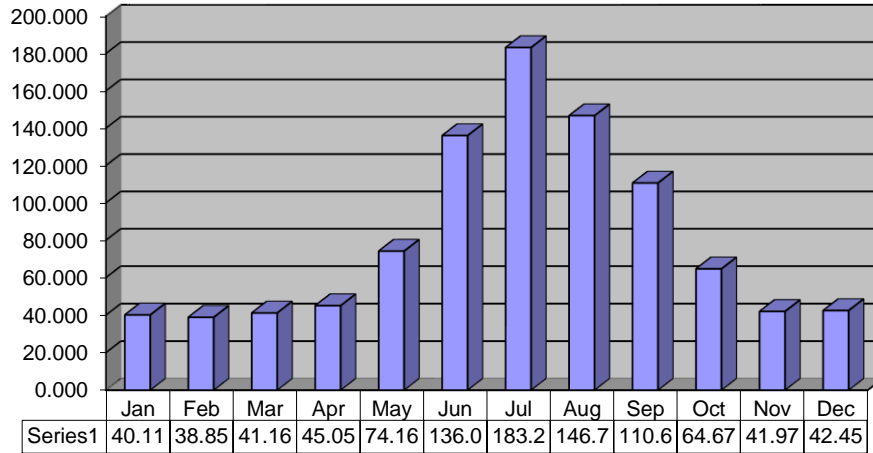


2011

MONTHLY PUMPAGE



MILLION GALLONS

2009	GALLONS
JAN	43,681,000
FEB	33,723,000
MAR	45,804,000
APR	50,348,000
MAY	82,166,000
JUNE	92,376,000
JULY	114,691,000
AUG	142,234,000
SEPT	104,991,000
OCT	59,233,000
NOV	41,298,000
DEC	47,520,000
	858,065,000

2009 Jan - Dec

858,065,000

2010	GALLONS
JAN	48,387,000
FEB	38,232,000
MAR	40,917,000
APR	49,474,000
MAY	111,468,000
JUNE	137,705,000
JULY	198,274,000
AUG	178,752,000
SEPT	123,371,000
OCT	69,616,000
NOV	44,206,000
DEC	43,085,000
	1,083,487,000

2010 Jan - Dec

1,083,487,000

2011	GALLONS
JAN	40,116,000
FEB	36,855,000
MAR	41,169,000
APR	45,056,000
MAY	74,167,000
JUNE	136,073,000
JULY	183,214,000
AUG	146,725,000
SEPT	110,654,000
OCT	64,675,000
NOV	41,975,000
DEC	42,457,000
	963,136,000

TOTAL YTD

2011 TOTAL YTD

963,136,000

105,071,000 More than the same period in 2009
 -120,351,000 Less than the same period in 2010