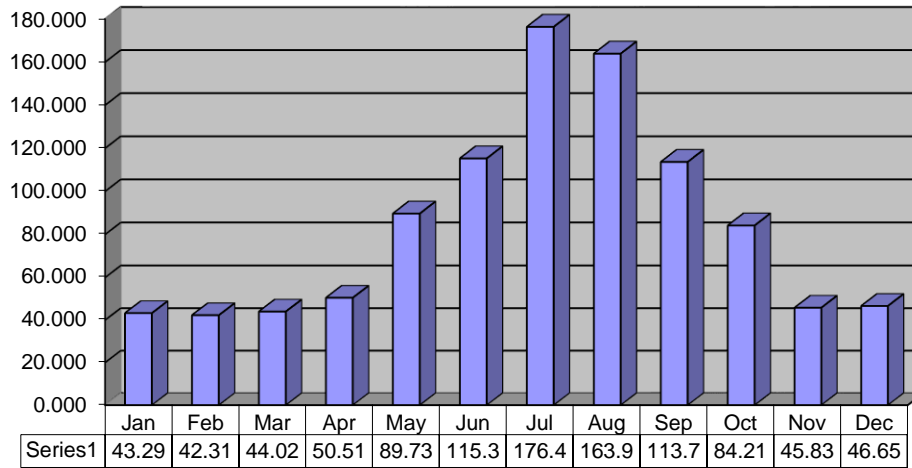


### MONTHLY PUMPAGE

**2013**



**MILLION GALLONS**

2011	GALLONS
JAN	40,116,000
FEB	36,855,000
MAR	41,169,000
APR	45,056,000
MAY	74,167,000
JUNE	136,073,000
JULY	183,214,000
AUG	146,725,000
SEPT	110,654,000
OCT	64,675,000
NOV	41,975,000
DEC	42,457,000
	<b>963,136,000</b>

2012	GALLONS
JAN	41,994,000
FEB	36,694,000
MAR	42,219,000
APR	68,507,000
MAY	98,685,000
JUNE	129,792,000
JULY	189,071,000
AUG	148,649,000
SEPT	113,053,000
OCT	63,904,000
NOV	41,712,000
DEC	42,514,000
	<b>1,016,794,000</b>

2013	GALLONS
JAN	<b>43,295,000</b>
FEB	<b>42,317,000</b>
MAR	<b>44,029,000</b>
APR	<b>50,517,000</b>
MAY	<b>89,738,000</b>
JUNE	<b>115,338,000</b>
JULY	<b>176,415,000</b>
AUG	<b>163,969,000</b>
SEPT	<b>113,702,000</b>
OCT	<b>84,210,000</b>
NOV	<b>45,834,000</b>
DEC	<b>46,654,000</b>
	<b>1,016,018,000</b>

**TOTAL YTD**

**2011 Jan - Dec**

963,136,000

**2012 Jan - Dec**

1,016,794,000

**2013 TOTAL YTD**

1,016,018,000

**52,882,000**  
**-776,000**

**More than the same period in 2011**  
**Less than the same period in 2012**