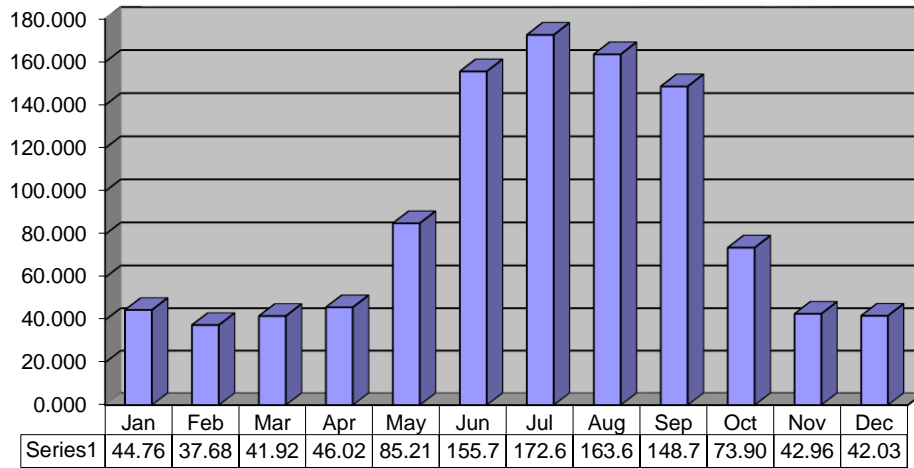


MONTHLY PUMPAGE

2014



MILLION GALLONS

2012	GALLONS
JAN	41,994,000
FEB	36,694,000
MAR	42,219,000
APR	68,507,000
MAY	98,685,000
JUNE	129,792,000
JULY	189,071,000
AUG	148,649,000
SEPT	113,053,000
OCT	63,904,000
NOV	41,712,000
DEC	42,514,000
	1,016,794,000

2013	GALLONS
JAN	43,295,000
FEB	42,317,000
MAR	44,029,000
APR	50,517,000
MAY	89,738,000
JUNE	115,338,000
JULY	176,415,000
AUG	163,969,000
SEPT	113,702,000
OCT	84,210,000
NOV	45,834,000
DEC	46,654,000
	1,016,018,000

2014	GALLONS
JAN	44,769,000
FEB	37,681,000
MAR	41,928,000
APR	46,027,000
MAY	85,212,000
JUNE	155,707,000
JULY	172,675,000
AUG	163,641,000
SEPT	148,742,000
OCT	73,902,000
NOV	42,963,000
DEC	42,032,000
	1,055,279,000

TOTAL YTD

2012 Jan - Dec

1,016,794,000

2013 Jan - Dec

1,016,018,000

2014 TOTAL YTD

1,055,279,000

38,485,000 More than the same period in 2012
 39,261,000 More than the same period in 2013