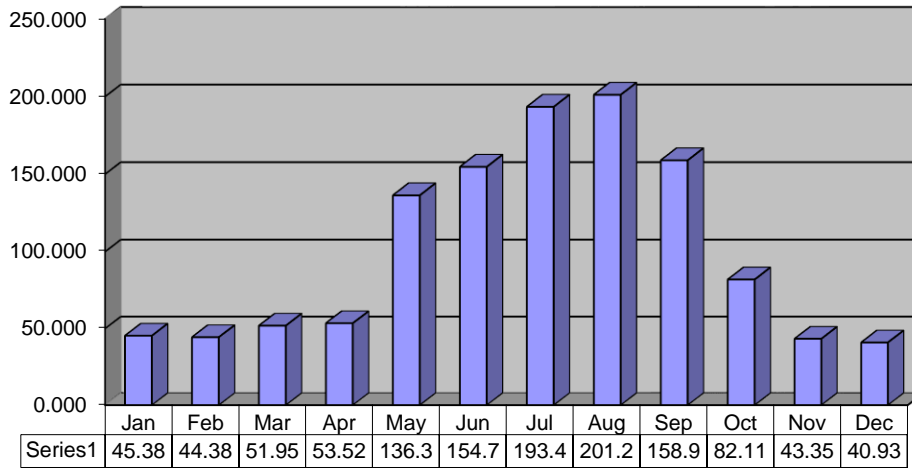


### MONTHLY PUMPAGE

2015



MILLION GALLONS

2013	GALLONS
JAN	43,295,000
FEB	42,317,000
MAR	44,029,000
APR	50,517,000
MAY	89,738,000
JUNE	115,338,000
JULY	176,415,000
AUG	163,969,000
SEPT	113,702,000
OCT	84,210,000
NOV	45,834,000
DEC	46,654,000
	<b>1,016,018,000</b>

2014	GALLONS
JAN	44,769,000
FEB	37,681,000
MAR	41,928,000
APR	46,027,000
MAY	85,212,000
JUNE	155,707,000
JULY	172,675,000
AUG	163,641,000
SEPT	148,742,000
OCT	73,902,000
NOV	42,963,000
DEC	42,032,000
	<b>1,055,279,000</b>

2015	GALLONS
JAN	<b>45,381,000</b>
FEB	<b>44,386,000</b>
MAR	<b>51,952,000</b>
APR	<b>53,526,000</b>
MAY	<b>136,391,000</b>
JUNE	<b>154,776,000</b>
JULY	<b>193,471,000</b>
AUG	<b>201,201,000</b>
SEPT	<b>158,977,000</b>
OCT	<b>82,117,000</b>
NOV	<b>43,351,000</b>
DEC	<b>40,936,000</b>
	<b>1,206,465,000</b>

TOTAL YTD

2013 Jan - Dec

1,016,018,000

2014 Jan - Dec

1,055,279,000

2015 TOTAL YTD

1,206,465,000

190,447,000 More than the same period in 2013

151,186,000 More than the same period in 2014